

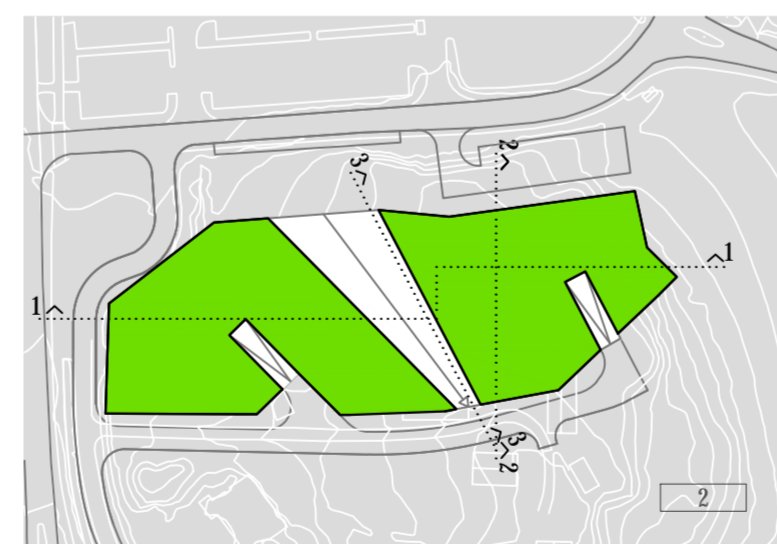
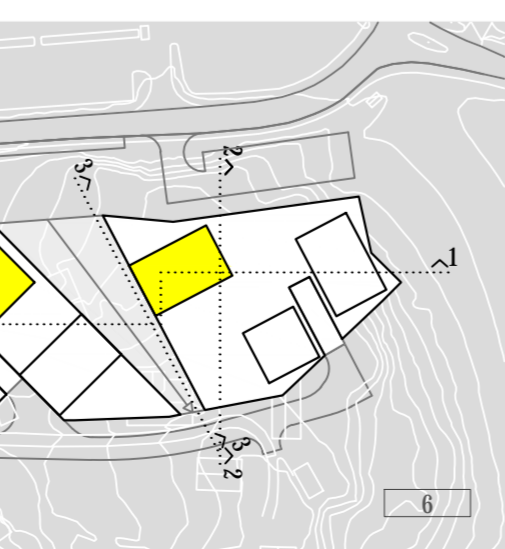
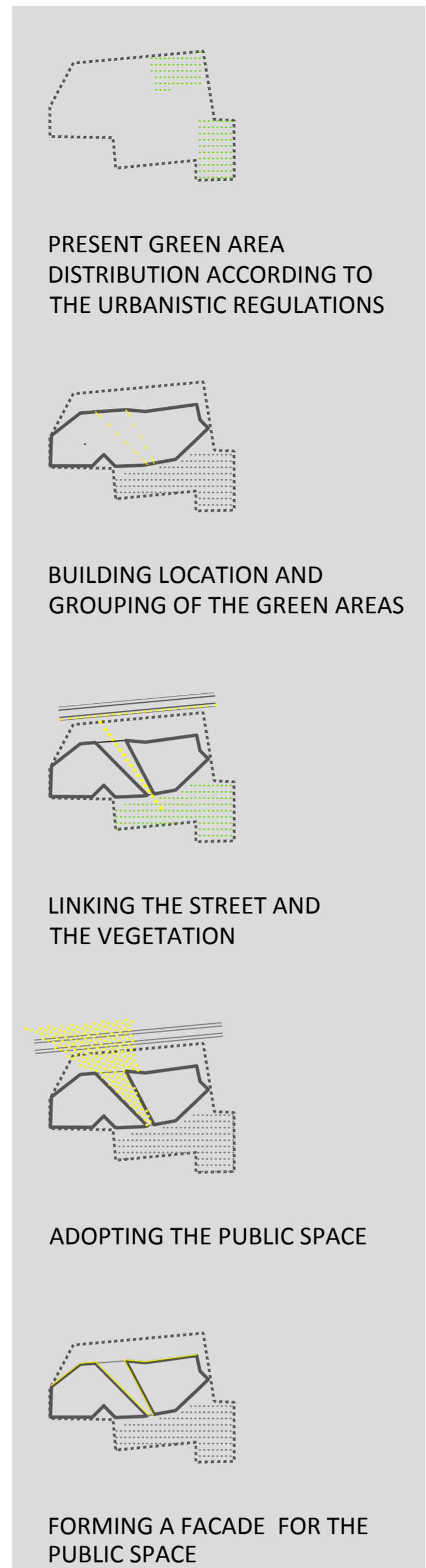
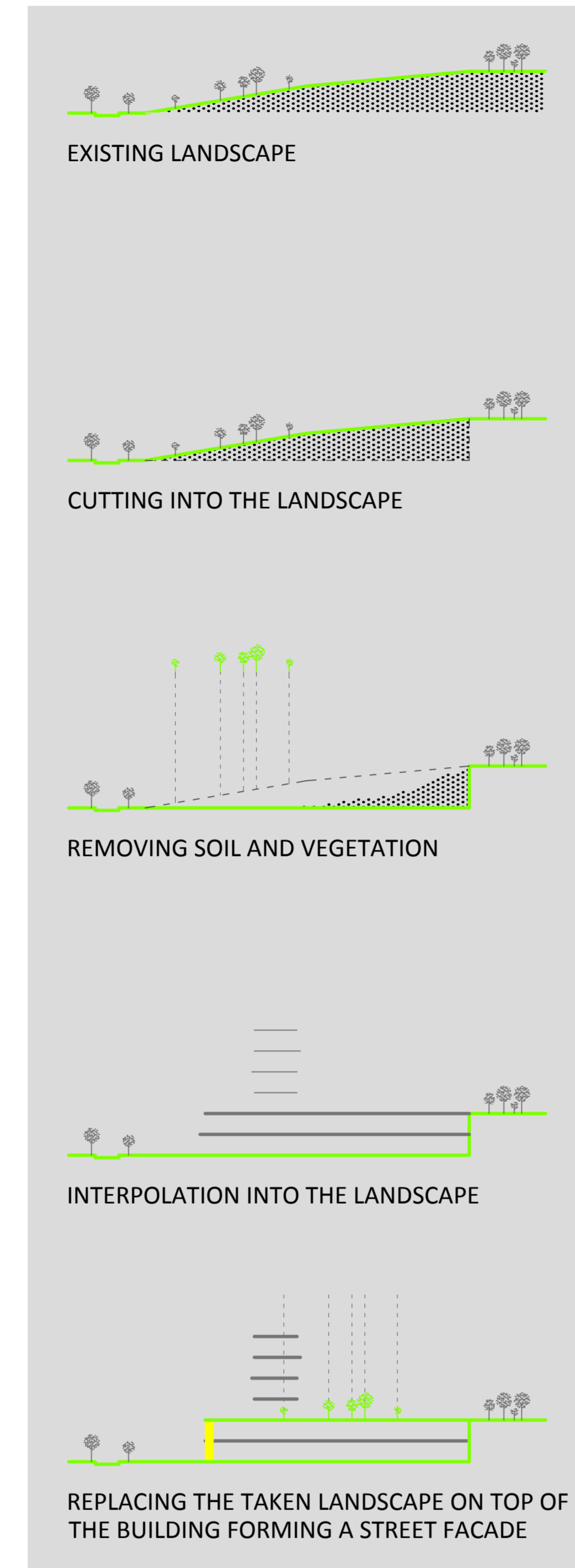
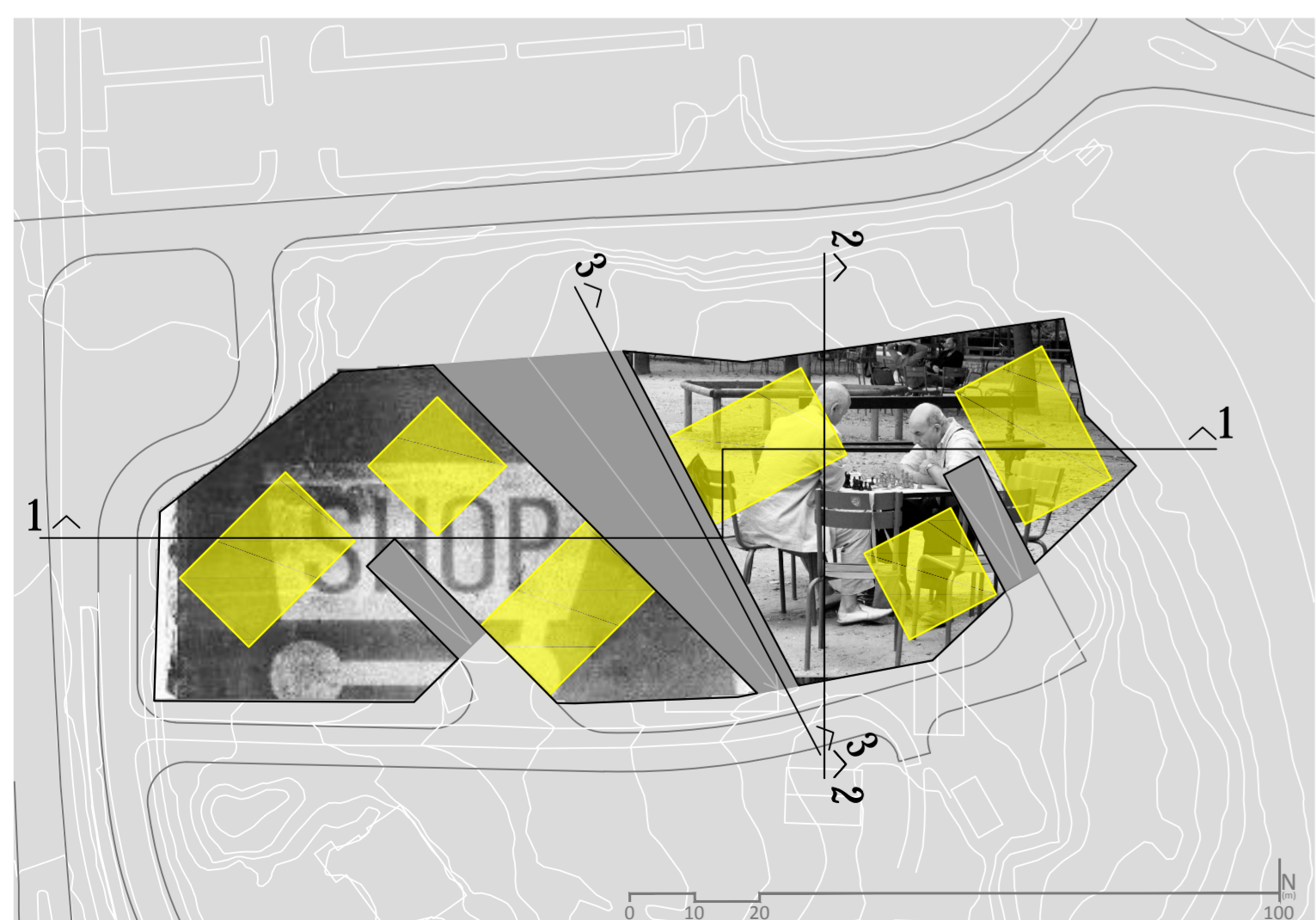
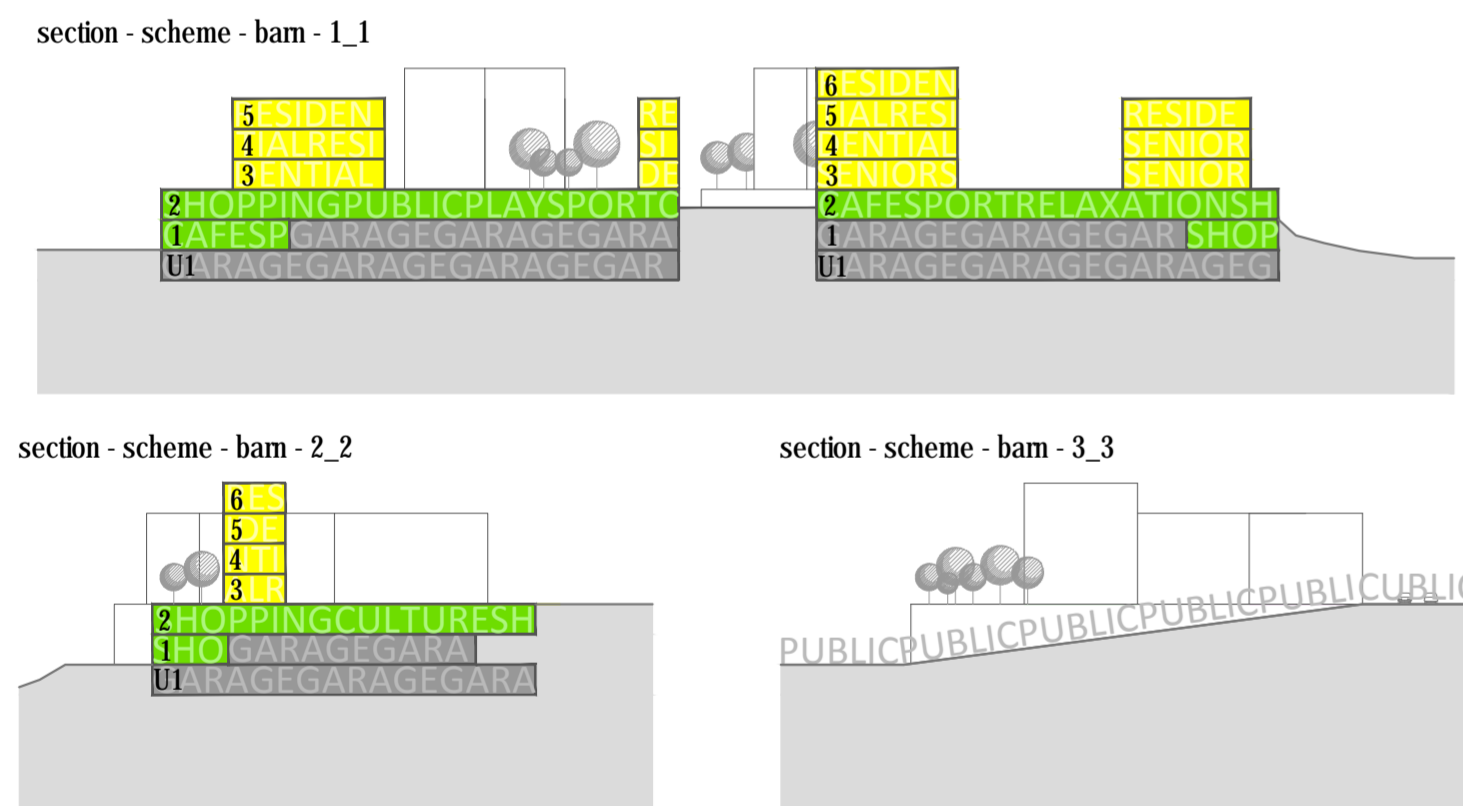
# BARN

The concept itself is similar to the Gartneri, digging out the hill and placing the building in its place to gain as much density as possible without raising the building too high. In order to make it more loosely than the centre, it is designed as two buildings connected by a public space, which consists of a ramp that becomes a pedestrian path that leads to the top of the active roof and to the green area behind the building, all the while viewing the building's facades.

The building houses smaller shops facing the town, it provides outside parking and residential areas above the active roof. The entrances to the underground garage are located in the back of the building and are intended for the owners of the flats.

The eastern building houses a number of functions intended for seniors, starting with flats on higher floors adjusted to their needs, over to public spaces consisting of a kitchen/restaurant, meeting places, spa and health centres, to the open spaces up on the active roof and pedestrian paths through the park behind the building. The building provides everything needed for a pleasurable life in old age without it being a typical nursing home.

The green area planned for this plot is simply relocated to a more appropriate location.



BARN  
 GARAGE SPACE /8594 sqm/  
 PUBLIC SPACE - SHOPPING, EDUCATION, SPORTS, ENTERTAINMENT, FOOD, RELAXATION /7019 sqm/  
 RESIDENTIAL SPACE /6060 sqm/

